

HOW TO INSTALL A RAIN BARREL

Supplies You'll Need

- **For the connection between downspout and rain barrel**
 - Flexible gutter tube (aka Flexible Elbow) or angled spout extension
 - Screws (to attach flexible gutter tube to downspout)
 - Hacksaw to cut through existing pipe to create the connection with the flexible tube to your barrel.
- **For the level base**
 - A Level and Cinder blocks, bricks, or other sturdy support.
- **For the overflow spout**
 - A length of garden hose.

1

Site Selection

- Select a site close to where you will be using the rainwater and under or adjacent to your downspout.

2

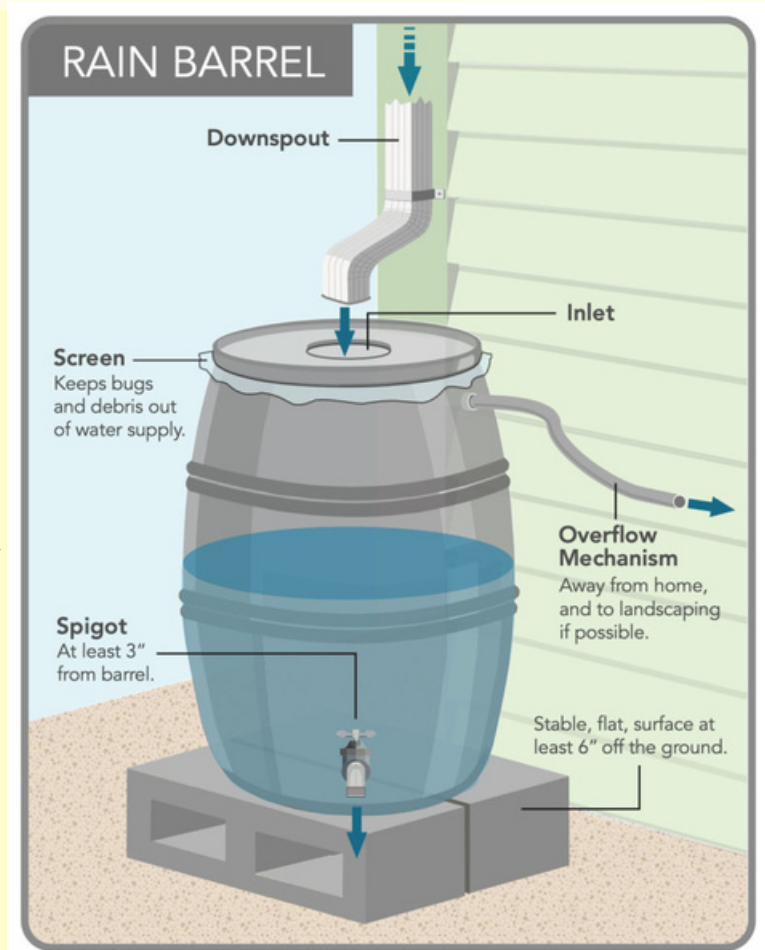
Prepare A Level Base

- Level the area you wish to install your barrel. Make sure that it is level from side to side and front to back.
- Your base should be solid and able to support a full rain barrel, which can weigh several hundred pounds.
- Common base materials are cement blocks, bricks, and landscape blocks.
- Your base should be tall enough for you to place a bucket or watering can underneath the spigot.

3

Measure and Cut Downspout

- Place your barrel on the base and measure an inch or two above it.
- Cut the downspout at the mark. You will need to remove this length of downspout so the spout can empty into the top of the barrel. A Hacksaw is a good tool to use.
- You may wish to keep the cut piece of downspout if you ever want to reassemble it or for winterizing your barrel.



4

Attach a Flexible Elbow

- Attach a flexible elbow or angled spout extension on your downspout to allow the water to discharge onto the top of your barrel.
- You may use a nail or screw to keep it in place.

5

Attach Overflow

- Attach a length of garden hose to one of the two overflow ports.
- Overflows are important to keep water away from the foundation of your house when your barrel is full.
- This can also be directed into another barrel.

USE AND MAINTENANCE CONSIDERATIONS

Overflow Control

- Direct excess water away from house & foundations.

Mosquito Control

- The screened lid should prevent mosquitos from entering the barrel. Make sure the screen remains in good condition.
- Use Mosquito Dunks (*Bacillus Thuringiensis Israilemsis*) if necessary. These use a bacteria toxic only to mosquito larvae, they kill mosquitoes within hours and last for 30 days or more.

Preventing Clogging

- The screened lid prevents any debris or insects from entering the barrel. Clean the screen regularly so water can enter the barrel.
- The screw on lid is easily removeable to shake off collected debris or to clean the inside of your barrel.

Winterizing

- At the first frost, completely empty the rain barrel and place it in a position where it will not collect water. This will protect the barrel from freezing and cracking.
- You can replace the piece of downspout you removed when you installed your barrel.
- If you are leaving your rain barrel in place during the winter, drain the barrel before it freezes and attach your overflow line to the bottom drain. This will allow excess water to pass through the barrel. Please be sure to have the hose discharge in an area that is not used by foot traffic to avoid creating an icy hazard.
- Diverters are also available to that to direct water away from the barrel.
- Please note the only way to completely avoid the risk of the barrel freezing and cracking is to remove the barrel for the winter.



The barrels are from **Camel's Hump**. More information about the barrels can be found on their website: <http://www.camels-hump.com>